



JUSTDIGGIT

# GERDES LANDWEHR

PROGRESS REPORT 3

## JUSTDIGGIT UPDATE

Dear John Hendrik Landwehr,

To start this progress report, I would like to take the opportunity to thank you again for supporting Justdiggit and our program in Tanzania. With this report, I would like to give you a general update about Justdiggit, our greening program in Singida and the impact that has been realised so far – partly thanks to your donation!

In the Chyulu hills, at the foot of Mount Kilimanjaro, we have dug over 109,000 soil bunds in 2022. These bunds bring over 1,000 hectares of degraded rangelands under restoration. By capturing rainwater, high quality grasses get the chance to sprout and establish, which will boost the ecosystem.

In the Kenyan South Rift, we started implementing our greening techniques in two large valleys with our partner SORALO. These areas are of great importance to surrounding communities, but are degrading fast. Bringing back permanent and high-quality vegetation is therefore top priority!

We started a new large-scale program in the north of Tanzania, where we now work in almost 70 villages. By bringing back trees, digging rainwater harvesting trenches and soil bunds, we aim to rehabilitate degrading landscapes on a large scale.

I hope this report will give you a good update on the program. Please do not hesitate to contact us for any additional questions.

Kind regards,



Marjolein Albers

Director Justdiggit Foundation

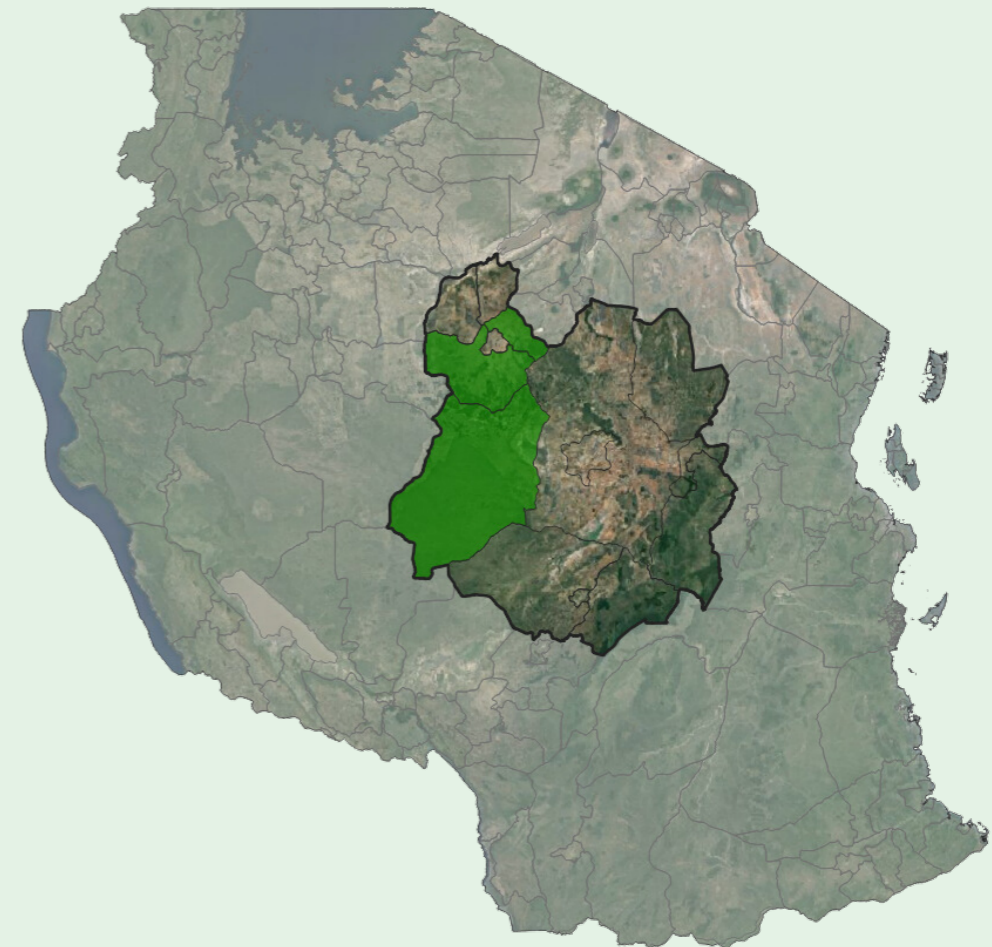


## A REFRESHER

In Tanzania, we activated over 150,000 farmers to bring back trees on their own land. This has led to the regeneration of almost 14 million trees! The annual impact report, that will be published this month, goes more into depth on the work we do and the impact we make. We invite you to give it a read!

In the program areas, everything is running according to plan. Program coordinators are visiting and coaching champion farmers. In turn, they train and onboard new farmers to start practising FMNR as well. In fact, a new program cluster started last October, and we are planning to start another cluster in the next month. This contributes to our goal of reaching over 1,000 program villages by the year 2030.

The rainy season has just started, which means that farmers are generally busy on their fields. The rains provide a good window to prune more trees, which will then grow quickly. This can be seen in the growing number of trees that have been regenerated!



This map shows the Central Tanzania landscape. Here we aim to reach 1,000 villages by 2030 with our FMNR program. Gerdes Landwehr supports the program in the area highlighted in green.

## IMPACT SO FAR

Recently, we conducted a thorough data analysis and, based on that, identified suspicious datapoints. Since all our monitoring is done manually, mistakes happen! With this analysis, rapid increases or decreases in the data are identified, and are then confirmed with the champion farmer – or adjusted if necessary. Where needed, program coordinators performed field visits to check the number of trees in the field. After this verification, we can share the following impact indicators with you. With your donations, the following impact is realized!

| Donor           | Trees   | Area (ha) | People | Carbon (T,t=20) | Water (m3,t=20) |
|-----------------|---------|-----------|--------|-----------------|-----------------|
| Gerdes Landwehr | 114,087 | 4,357     | 14,523 | 21,905          | 2,189,790       |

### **Explanation of the impact indicators**

- The number of trees reported, number of hectares under regreening and number of people benefitting from the intervention are all indicators that reflect the impact that has been made to date.
- Carbon sequestration and water retention indicators show the estimated long-term impact, to be realized during the coming 20 years, based on the current number of trees that have been realized.



TOGETHER WE CAN BRING BACK NATURE  
AND COOL DOWN THE PLANET!